



MINISTERUL EDUCAȚIEI  
ȘI CERCETĂRII  
AL REPUBLICII MOLDOVA



# WKSF WORLD KETTLEBELL SPORTS CHAMPIONSHIP

CHISINAU, MOLDOVA  
04 – 07 JUNE 2026



MINISTERUL EDUCAȚIEI  
ȘI CERCETĂRII  
AL REPUBLICII MOLDOVA



Stimați prieteni,

După experiența acumulată de la desfășurarea Campionatului European WKSF Kettlebell Sport din 2025, Chișinăul, capitala Republicii Moldova devine epicentrul Kettlebell Sport cu marea onoare de a fi gazdă a Campionatului Mondial 2026.

Federația noastră cu susținerea Ministerului Educației și Cercetării al Republicii Moldova, are menirea de a dezvolta proba de sport Kettlebell și Para Kettlebell cât pe teritoriul țării atât și la nivel internațional.

Cu siguranță, vom depune toate eforturile pentru ca Campionatul Mondial de Kettlebell, ediția 2026, să mențină standardele înalte de calitate ale WKSF iar sportivii să se simtă într-un mediu sigur și de fair-play.

Să câștige cel mai puternic.

Republica Moldova vă salută, Chișinău vă spune bun venit...

Dear friends,

After the experience gained from the WKSF Kettlebell Sport European Championship in 2025, Chisinau, the capital of the Republic of Moldova, becomes the epicenter of Kettlebell Sport with the great honor of hosting the 2026 World Championship.

Our Federation, with the support of the Ministry of Education and Research of the Republic of Moldova, aims to develop the Kettlebell and Para Kettlebell sports event both within the country and internationally.

We will certainly make every effort so that the 2026 Kettlebell World Championship maintains the high quality standards of the WKSF and that athletes feel in a safe and fair-play environment.

May the strongest win.

The Republic of Moldova greets you, Chisinau welcomes you...



**Dumitru PRODAN**

The President of the Sports Federation for People with Locomotor Disabilities from the Republic of Moldova

MOLDOVA

MOLDOVA



MINISTERUL EDUCAȚIEI  
ȘI CERCETĂRII  
AL REPUBLICII MOLDOVA



# 1. Competition

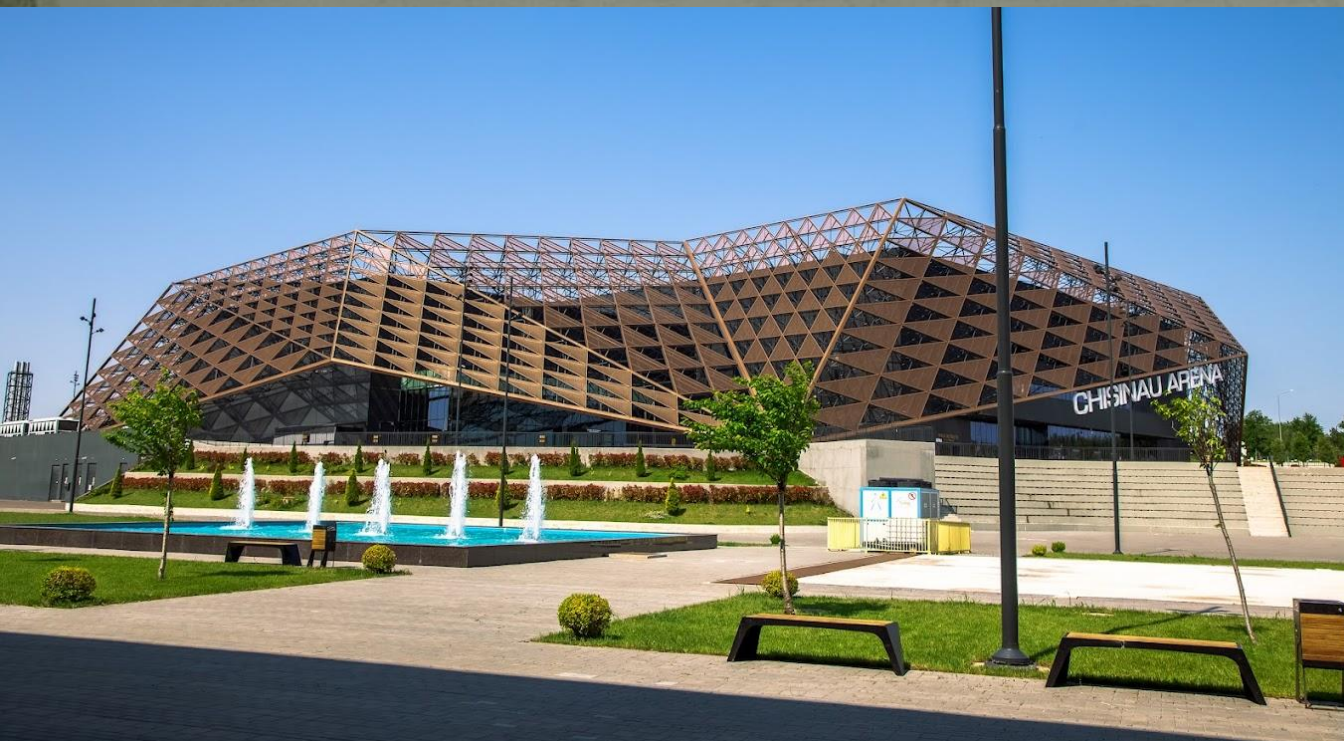
---

## 1.1. Dates

04-07 June 2026



MINISTERUL EDUCAȚIEI  
ȘI CERCETĂRII  
AL REPUBLICII MOLDOVA



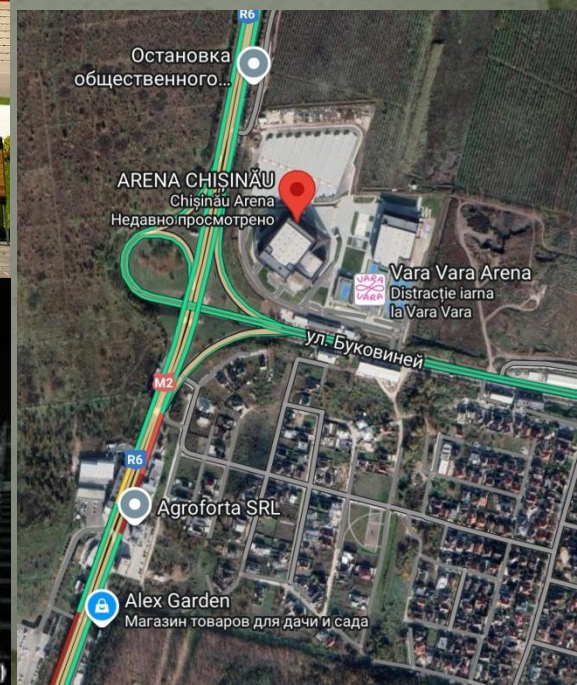
## 1.2. Venue

### ARENA CHISINAU

Address: 130 Calea  
Orheiului str., Stauceni,  
MD-4839, Chisinau



Veaceslav Ceban (RFE/RL)





MINISTERUL EDUCAȚIEI  
ȘI CERCETĂRII  
AL REPUBLICII MOLDOVA



- Height: 280 mm
- Diameter of the ball: 210 mm
- Diameter of handle: 34 mm
- Internal handle height: 55 mm
- Distance from handle 123 mm

Kg	Color
8 kg	Blue
12 kg	Brown
16 kg	Yellow
20 kg	Violet
24 kg	Green
28 kg	Orange
32 kg	Red

### 1. 3. Kettlebells and platforms

All Kettlebells will be WKSF accredited.

We are planning 8 - 10 participation platforms.



### 1. 4. Anti-Doping

Anti-Doping control will be carried out at the championship. Subject to agreement with WKSF and ANAD Moldova or other accredited organization.



Government of the Republic of Moldova  
National Anti-Doping Agency



MINISTERUL EDUCAȚIEI  
ȘI CERCETĂRII  
AL REPUBLICII MOLDOVA



## 2. Accommodation

- In Chisinau there are many hotels that can offer accommodation and food facilities from 1 to 5 stars.
- Additionally, accommodation options can be booked through companies such as Booking.com and others.
- Our federation will have collaboration contracts with a number of hotels that will offer our federation discounts for accommodation.
- Approximately in April, the information regarding the accommodation offers that we can offer will be updated. We ask interested teams to contact us at the email [prodandumitru82@gmail.com](mailto:prodandumitru82@gmail.com) regarding accommodation.



MINISTERUL EDUCAȚIEI  
ȘI CERCETĂRII  
AL REPUBLICII MOLDOVA



**Jolly Alon Hotel Chisinau**  
Maria Cebotari Street 37, MD-2012, Chisinau



**Bernardazzi Grand Hotel & SPA**  
38 Alexandru Bernardazzi Street, Chisinau





MINISTERUL EDUCAȚIEI  
ȘI CERCETĂRII  
AL REPUBLICII MOLDOVA

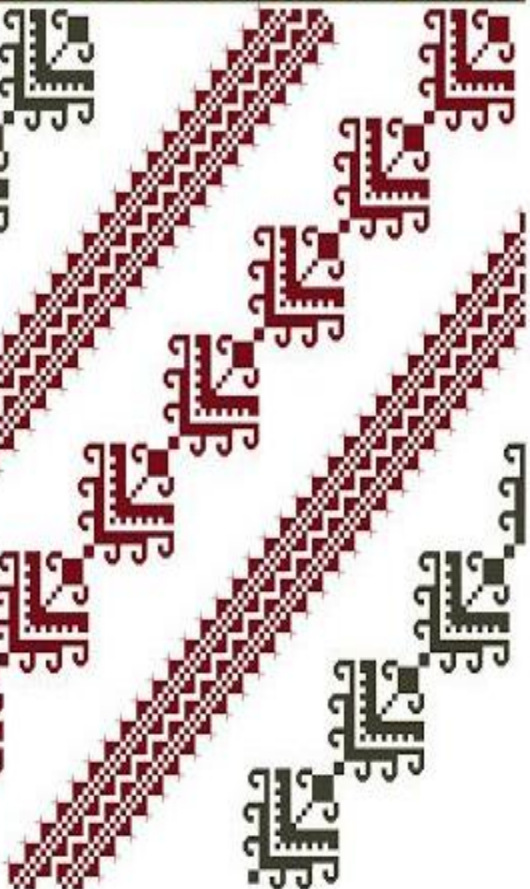


**Hotelul TA Collection**  
67B Stephen the Great and Saint Boulevard, Chisinau



**Little house Best Location**  
27 Strada Lev Tolstoi, 2001, Chisinau Moldova





MINISTERUL EDUCAȚIEI  
ȘI CERCETĂRII  
AL REPUBLICII MOLDOVA



### 3. Airport

#### Flights to Moldova

Moldova is closer than you think with an increasing number of direct flights to Chisinau Airport (RMO). This means that **Moldova is just two to three hours away from most major cities in Europe** with a selection of low-cost and major international airlines. In Chisinau we have only one airport. If you are traveling to Moldova from North America, Australia, South America or Asia, you can find good flight connections to Chisinau Airport on major international airlines from transportation hubs like Istanbul, Warsaw, or Vienna.

Take a look the map below to see the direct flights to Chisinau, Moldova. You can find more information on flights to Moldova at the [•https://airport.md/en/passenger/online-panel?today-flights=1](https://airport.md/en/passenger/online-panel?today-flights=1)





MINISTERUL EDUCAȚIEI  
ȘI CERCETĂRII  
AL REPUBLICII MOLDOVA



## 3. Transportation

### TRANSPORT TO AND FROM CHISINAU AIRPORT

It takes about 25 minutes by taxi to go the 13 kilometers from Chisinau International Airport to the center of Chisinau. The cost is about 80 lei, or \$5.

You can also take the 165 bus or trolleybus number 30 for 6 lei (0.30 Euros).

### TRANSPORTATION WITHIN CHISINAU

#### Public Transport in Chisinau

Chisinau's public transportation network is quite good, covering much of the city and with frequent schedules. Especially during rush hour, it can be the fastest option to get around the city and it is the most sustainable form of transport. This includes trolleybuses, buses and minibuses. A trolleybus, bus or minibus ticket is 6 lei (0.30 Euros). You pay when you get on from the ticket checker.

If you want to find out what public transportation routes are available in your locations it is recommended to check the mobile applications: **map.md**, **moovit** <https://moldova.travel/en/plan-your-trip/transportation-around-moldova/>

In addition, Chisinau's public transportation network and schedule is quite accurate in Google Maps.

#### Taking a Taxi in Chisinau

Taxis are another easy and inexpensive way to get around Chisinau. The easiest way as a visitor to get a trusted taxi and know what the fare will be is by using a mobile app like **Hip (previously itaxi)** on [iOS](#), [Android](#) or **Yandex Taxi** ([iOS](#), [Android](#)).

Alternatively you can also call one of the taxi services: 14000, 14111, 14222, 14333, 14999, 14441, 14442, 14447, or 14448. <https://moldova.travel/en/plan-your-trip/transportation-around-moldova/>

#### Renting a Car in Moldova

It is easy to rent a car if you want to drive around Moldova independently. You can find both international rental car brands (e.g., Hertz, Avis, Sixt, Europcar) as well as local Moldovan rental car companies. The most convenient place to rent a car in Moldova would be Chisinau, either at one of the airport rental car stands or at a pick up location downtown.

We drive on the right hand side of the road in Moldova and most traffic rules are similar to those in other European countries.



MINISTERUL EDUCAȚIEI  
ȘI CERCETĂRII  
AL REPUBLICII MOLDOVA



## 4. VISA

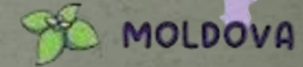
All participants who need a VISA please contact in advance:

by email - [prodandumitru82@gmail.com](mailto:prodandumitru82@gmail.com)

by whatsapp +37369391858



MINISTERUL EDUCAȚIEI  
ȘI CERCETĂRII  
AL REPUBLICII MOLDOVA



# Discover Moldova

## History of Moldova

Archaeological finds show that Moldovans are an ancient people, with a civilization going back to the Stone Age. Our beautiful local pottery dates to the Copper Age, when the Cucuteni-Tripolie culture flourished.

In the First Century A.D., the territory was populated by Dacian tribes, which Rome's Emperor Trajan considered a threat and decided to conquer. Present-day Romania, which was part of the conquered territory, got its name from the Roman Empire.

In 1359 the military overlord Bogdan I founded the feudal state of Moldova between the Carpathian Mountains, the Nistru River, the Danube and the Black Sea.

If you want to charm Moldovans, tell them you have heard of Stephen the Great. He is the most important character in the country's history, reigning from 1457 to 1504.

In 1812, the swath of Moldovan territory between the Prut and Nistru Rivers known as Bessarabia became a Russian protectorate. It retained that status for 106 years.

In 1918, Bessarabia opted to become part of Romania. But in 1940, after Germany and the Soviet Union signed the Ribbentrop-Molotov pact, dividing much of Eastern Europe between them, the Soviets annexed Moldova.

The Moldovan Soviet Socialist Republic gave way to an independent Moldova on August 27, 1991. In 2005, Moldova shifted its political orientation toward Western Europe by becoming the first former Soviet country to adopt a European Union action plan, under which it would join the economic and political alliance someday. Moldova has been steadily embracing the principles necessary for it to become an EU member.

Moldova's population is just under 3 million people, so there is plenty of room for guests! Although our country is small at only 33,843 square kilometers, we have a lot of different ethnic groups who share it and call it home, including Romanians, Russians, Ukrainians, Gagauz, Bulgarians, Roma and Jews. We are a country that welcomes everyone. You will feel this genuine hospitality when you're here.



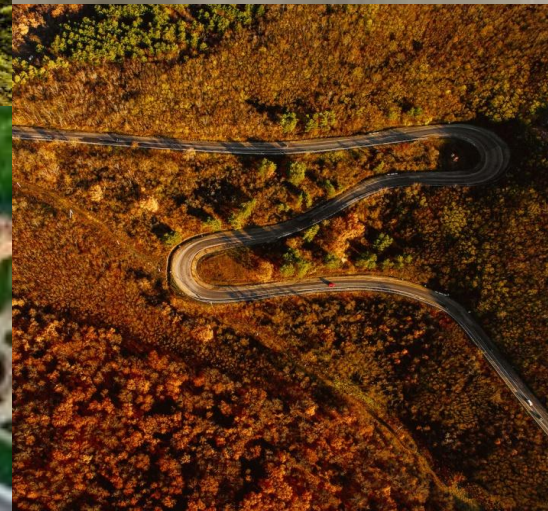
MINISTERUL EDUCAȚIEI  
ȘI CERCETĂRII  
AL REPUBLICII MOLDOVA



# Discover Moldova

<https://moldova.travel/en/places-to-visit/>

a place to find yourself  
**MOLDOVA**





MINISTERUL EDUCAȚIEI  
ȘI CERCETĂRII  
AL REPUBLICII MOLDOVA



# CHISINAU

Chisinau is a city in transition, with new and old buildings side by side. Many older buildings were built during Soviet times in a functional style typical of that era.

But Chisinau abounds in architectural masterpieces, many of which were designed by the famous Russian architect Alexandru Bernardazzi.

## A green city

Chisinau is a green city, with lots of trees along its streets and boulevards that are particularly beautiful during spring and summer. May is perfect for walking under the scent of blooming acacia.

Stefan cel Mare Central Park, Valea Morilor and the Stefan cel Mare Public Garden are good places to dodge the heat during summer or go on fall walks.

The city has many hotels, restaurants, cafes and bars, and new establishments providing better services continue to open. Most of them are concentrated in the old centre. We have restaurants with both traditional and European (Greek, French, Italian) and Oriental (Japanese, Vietnamese) cuisine. Being the capital of a wine-producing country, in Chisinau you will not miss places to taste good wine. The map of the wine shops and wine clubs is growing.

<https://moldova.travel/en/chisinau-city/#intro>



MINISTERUL EDUCAȚIEI  
ȘI CERCETĂRII  
AL REPUBLICII MOLDOVA



a place to find yourself  
**MOLDOVA**





MINISTERUL EDUCAȚIEI  
ȘI CERCETĂRII  
AL REPUBLICII MOLDOVA



## Money in Moldova

### MOLDOVAN CURRENCY

Moldova's currency is the leu, whose plural is lei and whose international symbol is MDL. One leu contains 100 bans. 1 Euro = approximately 20 lei and 1 USD is around 17.50 lei.

### FOREIGN EXCHANGE

It's not complicated to get lei when entering Moldova. Foreign currencies can be exchanged for lei at banks or currency exchange offices. You will find those offices at the airport, in hotels and on the streets of most cities. Most of the exchanges handle such major currencies as the euro, dollar, British pound, Swiss franc, Russian ruble, and Turkish lira, and currencies of neighboring countries, such as the Romanian leu and Ukrainian hryvnia. You can find official exchange rates on the Moldova National Bank website.

### ATMs IN MOLDOVA

You will find ATMs at hotels, banks and shopping centers in Moldova's major cities and at Chisinau International Airport. Most offer services in Romanian, Russian and English. Smaller cities and villages have limited numbers of ATMs, so it's a good idea to bring cash when you go to a rural area.

### CREDIT CARDS IN MOLDOVA

Major hotels and car rental agencies in Moldova, and many stores and restaurants in Chisinau accept credit cards, such as Visa, MasterCard, and American Express. But a lot of businesses inside and outside Chisinau only take cash so it's useful to have some cash with you. Credit card use in rural areas is still almost non-existent except at wineries and bigger establishments.



MINISTERUL EDUCAȚIEI  
ȘI CERCETĂRII  
AL REPUBLICII MOLDOVA



# Medals



Subject to approval with WKSF and the Ministry of Education and Research of the Republic of Moldova.



MINISTERUL EDUCAȚIEI  
ȘI CERCETĂRII  
AL REPUBLICII MOLDOVA



# Trophies



Subject to approval with WKSF and the Ministry of Education and Research of the Republic of Moldova.