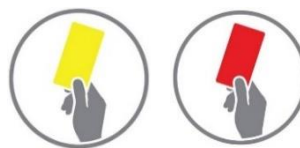








Pr.N°028 - 30 June 2025

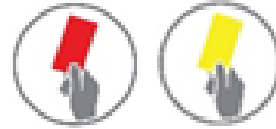
Approved by Executive Committee

Subject: **WKSF Yellow Card & Red Card**



Cases in which the Judge on the platform or Jury can punish the athlete:

- 1) Athlete argues with Judge YELLOW card; 
- 2) The athlete during his execution does not perform the exercise correctly and the Judge repeats the warning order several times, for example: If the athlete does not respond to the technical remarks of the judge on the platform. for fixing above the head or in rack position, other technical errors or non-count followed for many times, YELLOW card; 
- 3) The athlete receives 3 (three) YELLOW  cards during the All Set, and only after three yellow cards does he receive a RED card  and consequently the Stop command is given. In this case the Judge stops the athlete's execution and saves his result;
- 4) Athlete during the performance puts down the kettlebell and aggressively argues with the Judge or with members of the Jury. In this case the Judge marks the result assigned. Jury reviews the case and can present the athlete with the RED card  and consequently disqualification from the competition;
- 5) Some cases of incorrect behavior of the athlete outside the platform, such as: immediately after the competition, the athlete dissatisfied with the result shouts aggressively or destroys the material of the sports hall, curses or fears losing control. In these cases, the jury can present the RED card  to the athlete and consequently disqualify him from the competition. In case of material damage, the athlete must reimburse the expenses of the material arrangement, in case the athlete does not accept, the burden takes the organization where the athlete comes from;



The right touse Cards (Yellow and Red)

- judges on the platforms (only on their platforms);
- judge with the participants (in the warm-up area and in the area where athletes are formed to go to the platforms);
- chairman and members of the jury;
- members of the main judging panel.

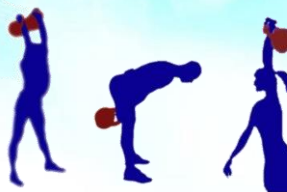
Subject: **Disciplinary sanctions for Coach or National Representative**

6) Disciplinary sanctions for Coach or National Representative: Aggressive and rude behavior by coach or national representative. Jury or main group of judges warns with Yellow card. Three Yellow cards during sporting event for the same person, Red card will be presented, and consequently coach or national representative must leave the competition.



Subject: **Disciplinary sanctions for Judges**

7) Disciplinary sanctions for judges are implemented by a decision of a joint meeting of the disciplinary commission and the board of judges. Sanctions may be: a warning; a strict warning; referral for re-certification, with repeated completion of the judicial seminar; deprivation of the judicial license.



Considerations:

- First of all, to start with: In the event that an athlete or coach sees errors in judgment, he must calmly finish his performance and as soon as the heat is over he can present a written protest to the jury, where the video of the race will be reviewed and a final decision will be made.
- The competition begins from the moment of registration and weigh-in, and the worthy behavior of absolutely everyone involved in the sporting event is emphasized: Athletes, Judges, Representatives, Coaches. In general, not only the athlete himself, but also the national organization is responsible for the athlete's behavior.

Panel of Judges:

Coordinator: Potokii Vasyl (UKR)

Member: Gonzalez Rosa (SP)

Member: Castiglioni Matteo (ITA)

Member: Aneta Przepióra-Jodłowska (POL)

WKSF Disciplinary Commission:

Coordinator: Ilika Oleh (ITA)

Member: Laura Mullen (IRL)

Member: Fonseca Eduardo (POR)

WKSF Executive Committee:

President WKSF: Oleh Ilika

